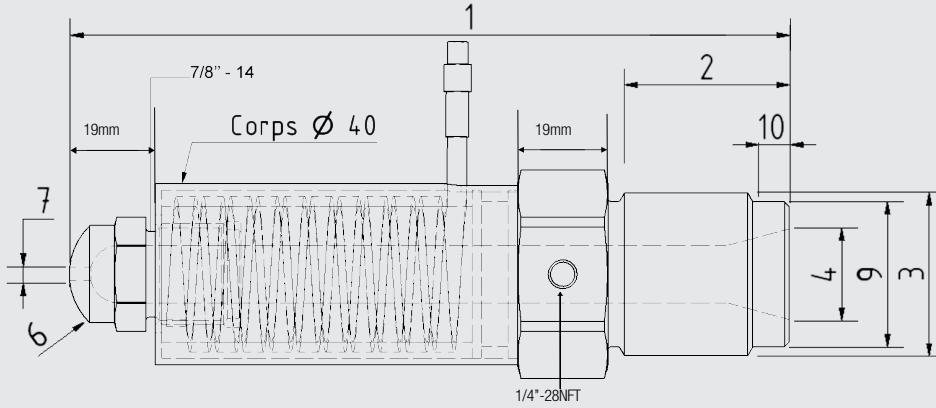
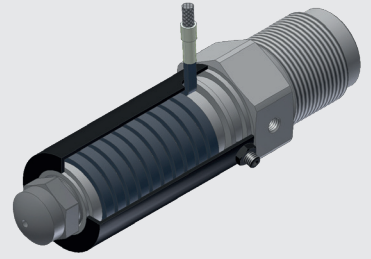


INTERNALLY HEATED NOZZLE

Order form



- Body length**
- | | | | | |
|--------------------------------|--------------------------------|---------------------------------|---------------------------------|---------------------------------|
| <input type="checkbox"/> 30 mm | <input type="checkbox"/> 40 mm | <input type="checkbox"/> 50 mm | <input type="checkbox"/> 60 mm | <input type="checkbox"/> 70 mm |
| <input type="checkbox"/> 80 mm | <input type="checkbox"/> 90 mm | <input type="checkbox"/> 100 mm | <input type="checkbox"/> 125 mm | <input type="checkbox"/> 150 mm |

Machine and Model

Injection rate in cm³/s

(1) Total length

(7) Opening (1.5, 2.5, 3, 4,)

(2) Thread Length

(8) Internal Design

(3) Thread Type
(M36x2 or 1 1/4-12UNF,...)

- Universal (GP)
 Polyamid (NRT)
 ABS (FT1)

(4) Rear opening

(9) Ø relief

(5) Diameter
(25 mm, 38 mm, 50 mm)

(10) Relief length

(6) Radius
(12,7mm, 15mm, 19mm, 35 mm...)

(8) Type

<input type="checkbox"/> Universel (GP)	<input type="checkbox"/> Polyamid (NRT)	<input type="checkbox"/> ABS (FT1)

FT1 & NRT : Opening mini : 3mm

- Tip length**
- 38 mm (1)
 - 70 mm (2)
 - 95 mm (3)
 - 127 mm (4)

Length 70, 95 & 127mm are not available in ABS version

(6) Radius

- 35 mm
- 30 mm
- 19 mm
- 15 mm
- 12,7 mm
- 10 mm
- 9 mm
- 120°
- 90°
- 70°
- 60°
- Other

(7) Opening

- 1,5 mm
- 2 mm
- 2,5 mm
- 3 mm
- 4 mm
- 5 mm
- 5,5 mm
- 6 mm
- 6,5 mm
- 7 mm
- 8 mm
- 9,5 mm
- Other

GP	1	R15	3
----	---	-----	---

Example: GP1-R15-1
Universal type (GP) - Tip length 38mm (1) - Radius 15mm - Opening 3 mm